



MARKETS AT A GLANCE

INDIAN MARKETS

INDICES	VALUE	CHANGE	% CHANGE
NIFTY	11003.00	56.80	0.52
SENSEX	37145.45	163.68	0.44
BANKNIFTY	27504.70	256.80	0.94

GLOBAL MARKETS

INDICES	VALUE	% change
DJIA	26,797.46	0.26
S&P 500	2,978.71	0.091
NASDAQ	8,103.07	-0.17
FTSE 100	7,244.90	-0.51
DAX	12,167.61	0.34
CAC 40	5,602.52	-0.03
NIKKEI	21,318.42	0.56
HANGSENG	26,681.40	-0.04

INDIAN SECTORIAL INDICES

INDICES	% change
NIFTY AUTO	0.89
NIFTY FIN SERVICE	0.87
NIFTY FMCG	0.68
NIFTY IT	-0.72
NIFTY MEDIA	0.33
NIFTY METAL	0.1
NIFTY PHARMA	0.11
NIFTY PSU BANK	1.61
NIFTY PVT BANK	0.98
NIFTY REALTY	0.67

MARKETS' SUMMARY

1. Nifty closing above 11,000 levels for first time in last five sessions.
2. The BSE Sensex was up 163.68 points at 37,145.45 and the Nifty50 rose 56.80 points to 11,003. About 1,583 shares advanced against 929 declining shares on the BSE.
3. The broader market outperformed frontliners with the Nifty Midcap index rising over a percent.

DAILY NEWS

Bonus to Ashok Leyland Employees

Ashok Leyland will give 5.42 percent bonus on FY19 profit to 6,146 employees, reports CNBC-TV18 quoting unnamed sources.

The agreement between management and employees to be signed on September 11 and company's bonus amount to employees will now total Rs 107.56 crore, sources said.

USFDA Approval

Pharma major Lupin said it has received approval for its Ethacrynic Acid tablets USP, 25 mg, from the United States Food and Drug Administration.

Lupin's Ethacrynic is the generic version of Edecrin tablets of Bausch Health Americas, Inc.

The drug is indicated for treatment of edema when an agent with greater diuretic potential than those commonly employed is required.

August MF Data

Liquid fund inflow jumped quite sharply to Rs 79,428 crore in August, from Rs 45,441 crore in previous month.

Credit risk outflow declined to Rs 2,270 crore in month gone by, against outflow of Rs 3,411 crore in July.

ETFs sold Rs 1,717 crore of equity shares in August against inflows of Rs 12,353 crore in previous month.

MOVERS & SHAKERS

Gainers of the Day

Symbol	CMP	% change
YESBANK	63	4.3
UPL	589.8	3.85
MARUTI	6,355.05	2.72
LT	1,360.50	2.4
BHARTIARTL	357.2	2.28

Losers of the Day

Symbol	CMP	% change
HCLTECH	1,085.00	-1.4
EICHERMOT	16,201.00	-1.26
INFY	830	-1.21
TECHM	714	-1.07
BAJAJ-AUTO	2,810.00	-1.03

52 Weeks' High

Symbol	LTP	Change	% change
ABBOTINDIA	9,950.00	223.75	2.3
BATAINDIA	1,559.85	18.5	1.2
CREDITACC	597.5	-2.15	-0.36
GFSTEELS	2.4	0.1	4.35
HNDFDS	505.15	-3.95	-0.78

52 Weeks' Low

Symbol	LTP	Change	% change
ADROITINFO	8.4	-0.4	-4.55
AIFL	2.4	-0.1	-4
ALCHEM	1.05	0.05	5
ALPSINDUS	0.5	0.05	11.11
ARVINDFASN	450	-13.7	-2.95

Volume Shockers

Symbol	Volume
PALASHSECU	34,884
BLUEDART	58,805
TNTELE	440
MANGCHEFER	5,08,835
MASTEK	3,75,539
GEECEE	42,377
VIDHIING	1,57,380

OI Spurts

Symbol	Change in OI	% Change in OI
CESC	276	32.36
JUSTDIAL	758	32.2
BANKNIFTY	1,75,766	29.85
EQUITAS	1,294	29.78
RBLBANK	3,235	20.94

RBI REFERENCE RATE

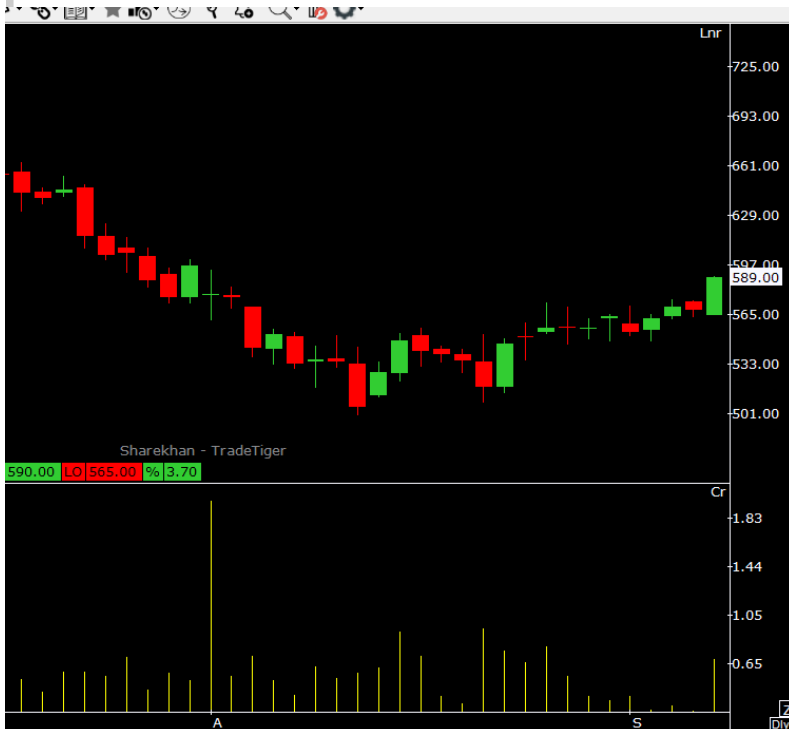
INR / 1 USD	71.70
INR / 1 EURO	79.13
INR / 100 Jap. YEN	66.98
INR / 1 POUND Sterling	88.53

FII DERIVATIVES STATISTICS

	BUY		SELL		OPEN INTEREST AT THE END OF THE DAY	
	No. of contracts	Amt in Crores	No. of contracts	Amt in Crores	No. of contracts	Amt in Crores
INDEX FUTURES	43155	3009.00	38715	2700.46	163830	12462.55
INDEX OPTIONS	1944358	126627.80	1921913	125226.55	717052	55306.50
STOCK FUTURES	196915	10771.57	208292	11146.39	1509262	88633.23
STOCK OPTIONS	83582	4685.26	82278	4571.41	60480	3396.31
						-1448.82

TECHNICAL RECOMMENDATIONS

1. UPL FUTURE : (BUY)



PIVOT LEVELS				
R2	R1	PIVOT	S1	S2
606.33	597.67	581.33	572.67	556.33

UPL FUTURE : UPL IN UP TREND AND UP RSISTANCE BREAKOUT AND TODAYS GIVESH RANGE BREAKOUT AND RSI GIVES A BUY SINGNALS.

BUY UPL IN FUTURE ABOVE 590 TGT 595/602 SL BELOW 584

1. YESBANK FUTURE (BUY)



PIVOT LEVELS				
R2	R1	PIVOT	S1	S2
66.87	65.03	62.57	60.73	58.27

YESBANK FUTURE : IT'S A SIDEWAYS TRENDS AND RANGE BREAKOUT AND FOMRED A DOUBLE BOTTOM FORMED BREAKOUT A LEVEL ABOVE 65, RSI GIVES A BUY SINGNALS

BUY YESBANK IN FUTRE ABOVE 65.20 TGT 66.50/68.50 SL BELOW 62

TECHNICAL RECOMMENDATIONS

TECHNICAL VIEW : UPL LTD(BUY)



PIVOT LEVELS				
R2	R1	PIVOT	S1	S2
607.87	598.83	581.57	572.53	555.27

UPL LTD : UPL IN UP TREND AND UP RISTANCE BREAKOUT AND TODAYS GIVESH RANGE BREAKOUT AND RSI GIVES A BUY SINGNALS.

BUY UPL IN CASH ABOVE 590 TGT 595/602 SL BELOW 584

TECHNICAL VIEW: YESBANK LTD CASH (BUY)



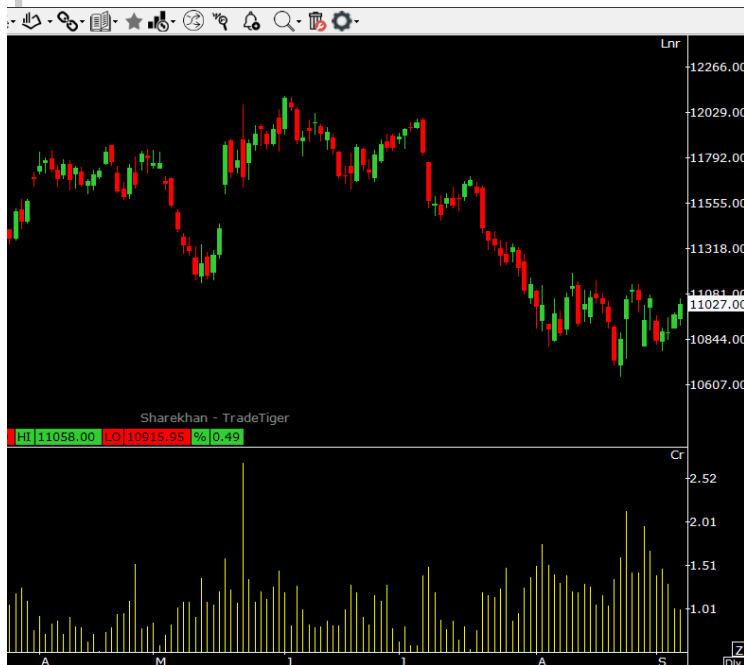
PIVOT LEVELS				
R2	R1	PIVOT	S1	S2
66.57	64.78	62.32	60.53	58.07

YESBANK LTD : IT'S A SIDEWAYS TRENDS AND RANGE BREAKOUT AND FOM- RED A DOUBLE BOTTOM FORMED BREAKOUT A LEVEL ABOVE 65, RSI GIVES A BUY SINGNALS

BUY YESBANK IN CASH ABOVE 65.20 TGT 66.50/68.50 SL BELOW 62

TECHNICAL RECOMMENDATIONS

3. NIFTY FUTURE (BUY)



PIVOT LEVELS

R2	R1	PIVOT	S1	S2
11,142.37	11,084.68	11,000.32	10,942.63	10,858.27

NIFTY FUTURE: TODAY'S ITS BULLISH ENGULISH FULL CANDLESTRICK PATTERN AND RANGE BREAKOUT GIVESH AND UPPER RESISTANCE BREAKOUT LEVEL 11000, RSI GIVES A BUY SIGNALS ,

BUY NIFTY IN FUTRE ABOVE 11050 TGT 11150/11250 SL BELOW 10900

4. BANK NIFTY FUTURE (BUY)



PIVOT LEVELS

R2	R1	PIVOT	S1	S2
27,970.18	27,757.37	27,396.18	27,183.37	26,822.18

BANK NIFTY FUTURE: TODAY'S ITS BULLISH ENGULISH FULL CANDLESTRICK PATTERN AND RANGE BREAKOUT GIVESH AND UPPER RESISTANCE BREAKOUT LEVEL 27600, RSI GIVES A BUY SIGNALS

BUY BANK NIFTY IN FUTRE ABOVE 27600 TGT 27700-27850 SL ABOVE 27480.

PREVIOUS DAY'S PERFORMANCE

CALL	SEG-MENT	ADVISE	ENTRY	TGT	SL	STATUS
NIFTY	INDEX	SELL	10950	10900-10850	11000.	SL TRG
BANKNIFTY	INDEX	SELL	27260	27160-27060	27380.	SL TRG
DLF LTD	CASH	BUY	155	158-161	151.	HIGH 156.90
ICICIPRULI LTD	CASH	SELL	435	425-415	448.	NOT EXECUTED
ICICIPRULI	FUTURE	SELL	435	430-425	442.	NOT EXECUTED
DLF	FUTURE	BUY	156	158-160	153	HIGH 157.85

DISCLAIMER

This document is solely for the personal information of the recipient, and must not be singularly used as the basis of any investment decision. Nothing in this document should be construed as investment or financial advice. Each recipient of this document should make such investigations as they deem necessary to arrive at an independent evaluation of an investment in the securities of the companies referred to in this document including the merits and risks involved, and should consult their own advisors to determine the merits and risks of such an investment. Reports based on technical and derivative analysis center on studying charts of a stock's price movement, outstanding positions and trading volume. The information in this document has been printed on the basis of publicly available information, internal data and other reliable sources believed to be true, but we do not represent that it is accurate or complete and it should not be relied on as such, as this document is for general guidance only. Trade Nivesh shall not be in any way responsible for any loss or damage that may arise.